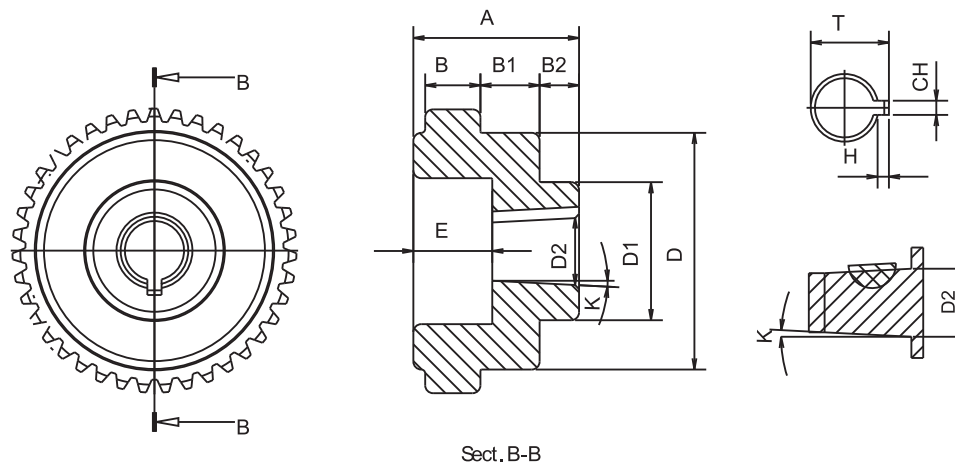


REFERENCE			MOTOR SIDE COUPLING GEAR							
KW.	HP	E.MOTOR	CODE	A	B	D	D2	CH	T	Z
11 / 15	15 / 20	160	DK4203	42 & 62	14	60				39
			DK421903				19	6	22	
			DK422403				24	8	28	
			DK422803				28	8	32	
			DK423203				32	8	36	
			DK423803				38	10	43	
			DK424203				42	12	47	



PUMP SIDE COUPLING GEAR													
CODE	A	B	B1	B2	D	D1	D2	E	CH	T	H	K	Z
DK421P03	42	14	14	10	60	35	16.66	20	4	-	2	1/8	39
DK422503			-	-		-	25	-	6	28	3	-	
DK422PD03			-	-		-	22.15	-	6.35	22.15	3,2	-	
DK422PK03			-	-		-	22.15	15,5	4	-	2	1/8	
DK423PK03			-	-		-	22.2	-	4	-	2	-	
DK423PD-1-03			-	-		-	25,40	-	6	28,40	3	-	
DK423PD-2-03			-	-		-	29.21	-	8	33.21	4	-	
DK423PD-3-03			-	-		-	31,75	-	8	35,75	4	-	
DK42-G2B-03			-	-		-	12.5	-	3	-	1,5	1/5	
DK42-1M03			-	-		-	13.9	-	3	-	1,5	1/8	
DK42-G2-1403			-	-		-	14.3	-	4	-	2		
DK42-2-03			-	-		-	17.2	-	4	-	2		
DK42-2-03T			-	-		-	17.2	-	3.2	-	1,6		
DK42-G3-03			-	-		-	18.36	-	4	-	2	1/5	
DK42-G3B-03			-	-		-	19.3	-	5	-	2,5		
DK42-SAE-A-03			-	-		-	19.05	-	5	21,55	2,5	-	
DK42-G3,5-03			-	-		-	21.08	-	5	-	2,5	1/8	
DK42-ZG-03			-	-		-	25.2	-	5	-	2,5	1/5	
DK42-35-03T			-	-		-	25.6	-	4.76	-	2,4	1/8	
DK42-35-03			-	-		-	25.6	-	5	-	2,5		
DK42-4-03T			-	-		-	33.3	-	6.35	-	3,2		
DK42-4-03			-	-		-	33.3	-	7	-	3,5		